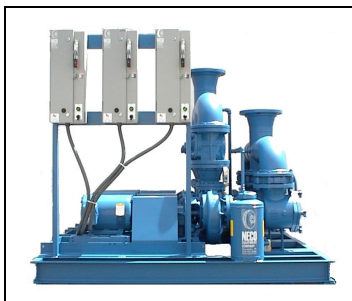




PACKAGED CIRCULATING SYSTEMS SERIES PCS



FEATURES

- End-Suction, In-line, Split-Case Pumps
- Premium Efficiency Motors
- Check Valves or Triple Duty Valves on All Pumps
- Suction Diffusers or Y-strainers on All Pumps
- Butterfly Valve Isolation Valves
- Air Separators, Expansion Tanks, make-up water, etc.
- Chemical Feeders
- Vibration Isolation and inertia bases
- Factory Assembled
- Structural Steel Base
- Split bases for tight field requirements
- Plate & Frame or Shell & Tube Heat Exchangers
- Automated Valves
- Analog or Digital Gauges
- Thermometers, P/T Ports, etc.
- Control by 1 Flow Transmitter (by SFI) and up to 4 Differential Pressure Inputs

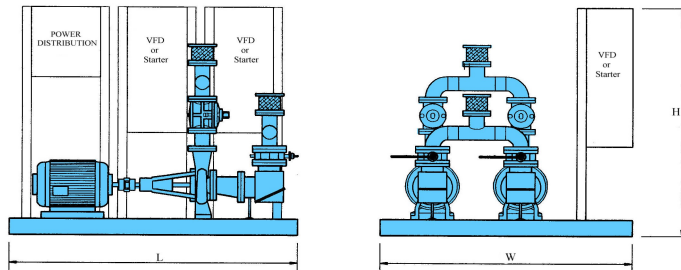
BENEFITS

- Economically customized to meet specific size and configuration requirements
- Single suction and discharge connections
- Factory Service and support
- Reduced on-site engineering
- Single source responsibility
- Single Power Connection
- Building Management interface
- Reduced space requirements
- One Housekeeping pad

Neco's other packaged & customized systems include:

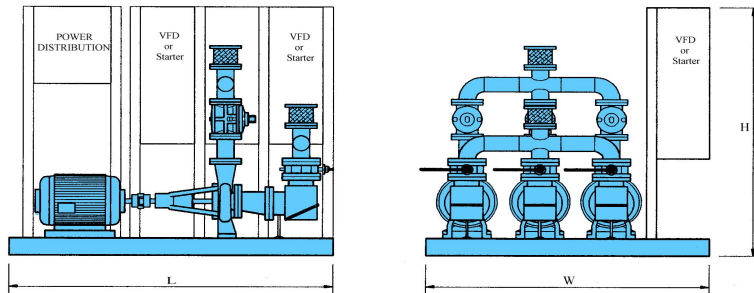
- Water Pressure Booster
- Sewage Lift Stations
- Boiler Feed Systems
- Elevator Sump Pumps with oil sensors
- Packaged Chilled Water and Hot Water Circulating Systems
- Condensate Return Units
- Geothermal Circulating Systems
- Rain Water Harvesting Systems
- Heat Transfer Systems
- Fuel Oil Pump Sets

Visit us on the web ~ www.necosystemsinc.com



SYSTEM DIMENSIONS—DUPLEX

SYSTEM CONNECTION SIZE	HP PER PUMP	L x W x H (INCHES)	WEIGHT (LBS.)
2"	.50 – 7.5	60 x 66 x 72	1,400
3"	1.5 – 10	60 x 66 x 72	1,600
4"	2 – 10	66 x 72 x 72	1,900
	15 – 20	84 x 72 x 72	2,400
6"	5 – 10	66 x 72 x 72	2,300
	15 – 40	90 x 72 x 72	3,800
8"	10 – 20	90 x 80 x 72	3,500
	25 – 30	90 x 84 x 72	3,900
	40 – 60	96 x 84 x 72	5,200



SYSTEM DIMENSIONS—TRIPLEX

SYSTEM CONNECTION SIZE	HP PER PUMP	L x W x H (INCHES)	WEIGHT (LBS.)
2"	.50 – 7.5	60 x 90 x 72	1,900
3"	1.5 – 10	60 x 90 x 72	2,200
4"	2 – 10	66 x 96 x 72	2,600
	15 – 20	84 x 96 x 72	3,400
6"	5 – 10	66 x 96 x 72	3,300
	15 – 40	90 x 96 x 72	5,500
8"	10 – 20	90 x 102 x 72	5,000
	25 – 30	90 x 108 x 72	5,500
	40 – 60	96 x 108 x 72	7,400

.50-10HP Close Coupled Pumps; 15-60HP Flexible Coupled Pumps
 Maximum working pressure is 175psi.

Standard arrangement shown, other arrangements available.
 Not for construction purposes unless certified.

Neco's other packaged & customized systems include:

- Water Pressure Booster
- Sewage Lift Stations
- Boiler Feed Systems
- Elevator Sump Pumps with oil sensors
- Packaged Chilled Water and Hot Water Circulating Systems
- Condensate Return Units
- Geothermal Circulating Systems
- Rain Water Harvesting Systems
- Heat Transfer Systems
- Fuel Oil Pump Sets

Visit us on the web ~ www.necosystemsinc.com